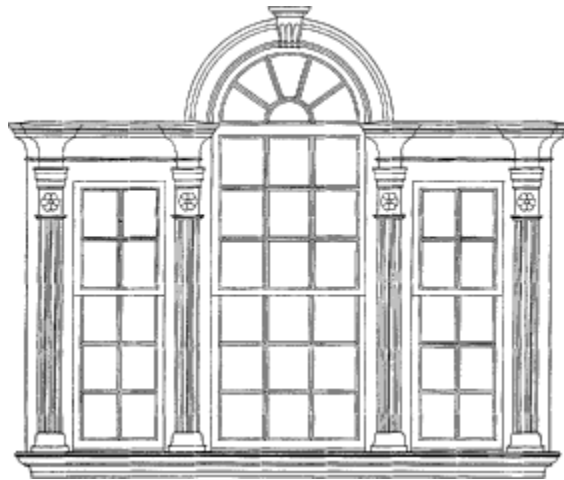


Field Guide For Georgetown Homes

By

Topher Mathews



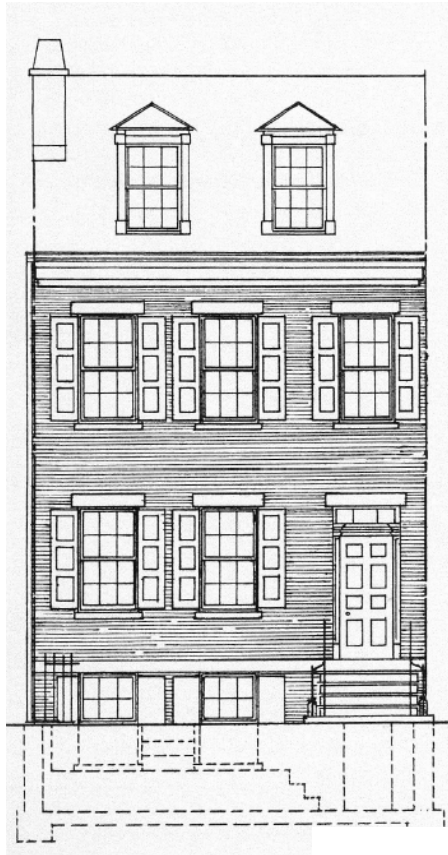
Federal Style

1780 - 1840

Dormer windows

Double hung windows with six over six lights (i.e. six panes of glass per sash)

Simple lintels over windows

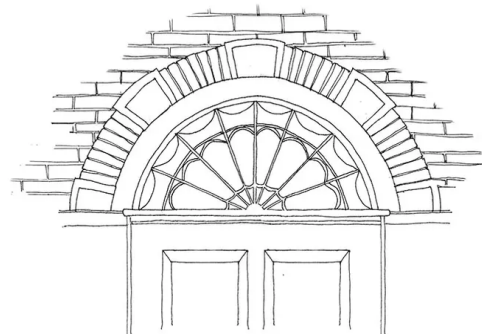


Other common features:

Dentil Mouldings on cornice:



Fanlight over door:



Greek Revival

1830 - 1860

Full entablature at roofline (i.e. distinctively thick frieze and cornice)

Pilasters (i.e. surface mounted "columns") along the side of the house

Portico supported by columns



Other common features:

Pediments

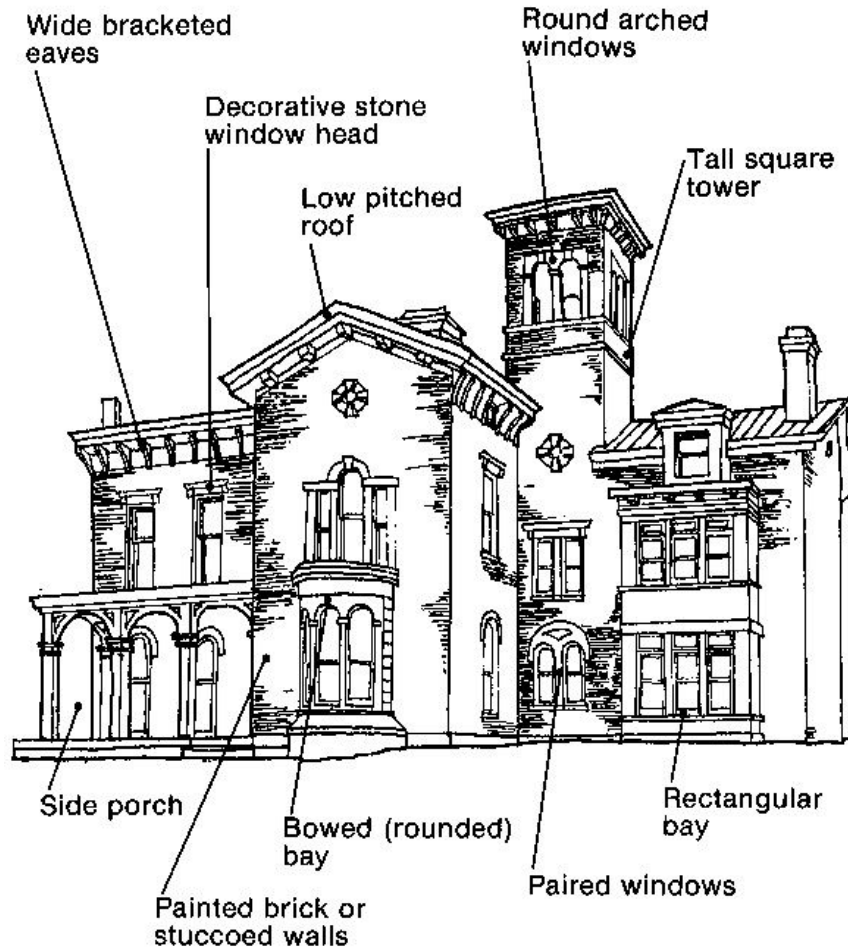


Row of square lights over door



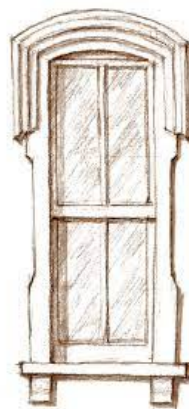
Italianate

1840 - 1880

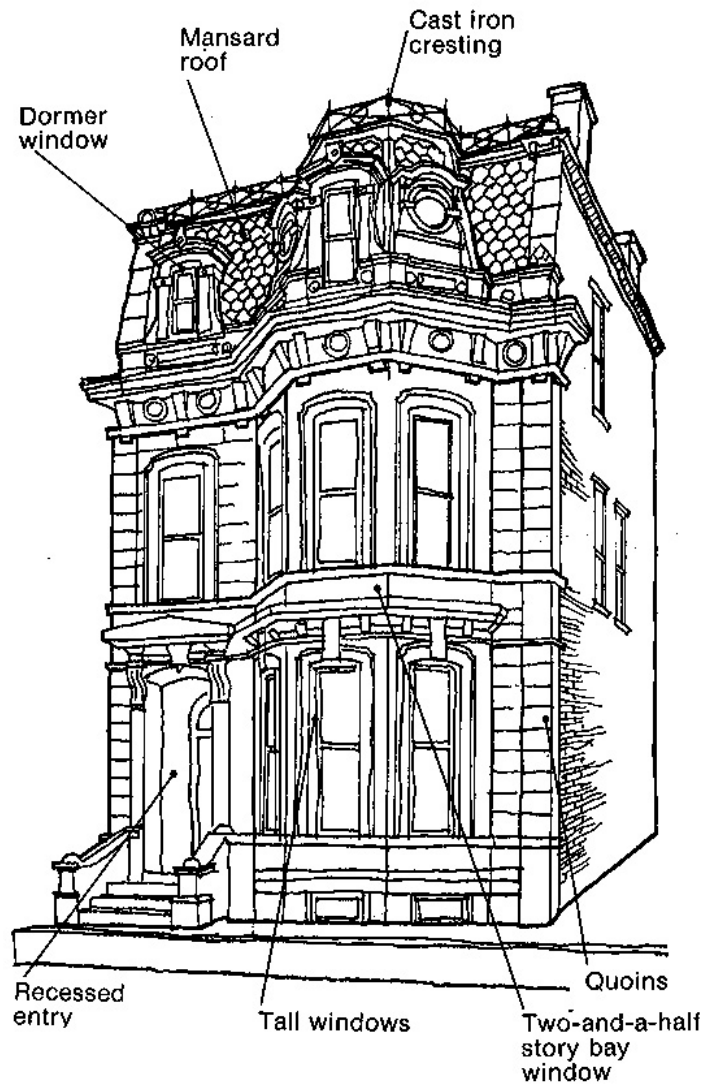


Other common feature:

Rounded hooded window:



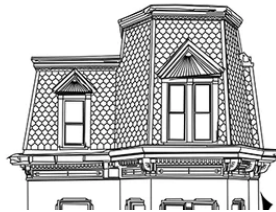
Second Empire 1860 - 1900



Other common

features:

Slate roof:



Ornamental brackets under eaves:



Victorian Styles in Georgetown:

Richardsonian Romanesque:

- 1880 - 1900
- Rounded arches throughout
- Roughly hewn stonework
- Uncommon in Georgetown, but can be found along Q St. near 31st



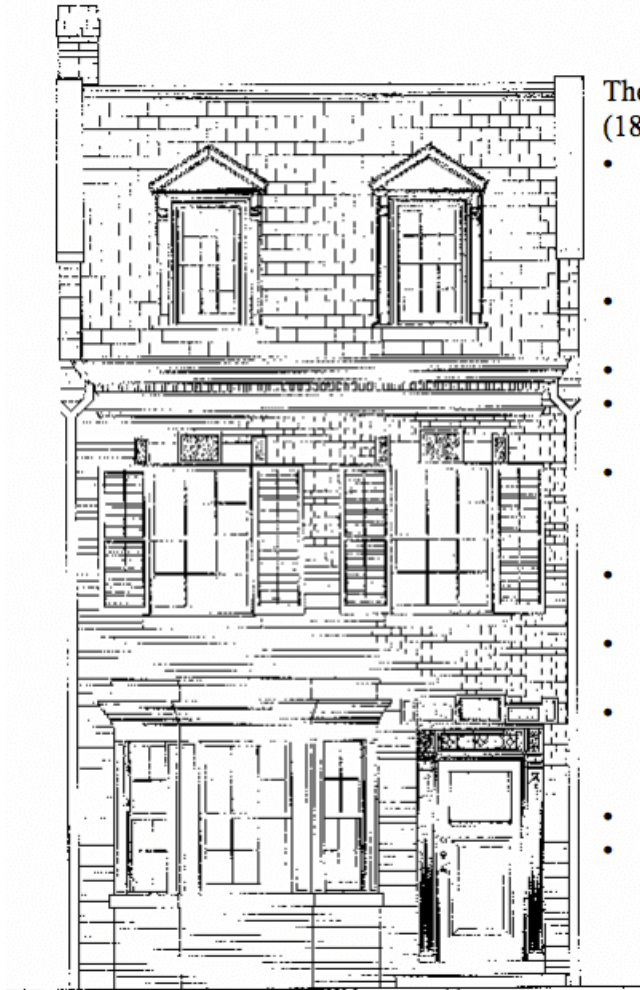
Queen Anne:

- 1880 - 1910
- "Gingerbread House" style in most places,
but in DC was more commonly the patterned
masonry variant, typified by modest
decorative brickwork
- Extremely common in Georgetown



Colonial Revival

1880 - 1930



The Colonial Revival Style (1880-1930)

- Characterized by the use of colonial design motifs, a combination of elements from the Federal and Greek Revival styles;
- Symmetrical red brick facade laid in Flemish bond;
- High stoop or simple steps;
- Stone trim around doorway and windows;
- Six or eight paneled wood door with leaded fanlight or rectangular sidelights and transom;
- Simple iron handrails and fences;
- Multi-pane, double-hung wood windows;
- Classical details often include urns, festoons, and broken pediments;
- Delicate, slender moldings; and
- Simple cornice.

Other Common Features:

Patriotic designs (esp. Bald eagles):

- However, be careful to note that during The 1930s and after, many homeowners added these features to Victorian homes



Shutters (often non-functional):

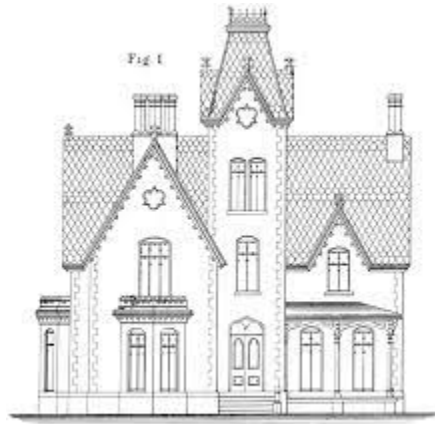
- Again, these were also often added to Victorian homes during the 20th cen.



Other Less Common Styles in Georgetown:

Gothic Revival:

- 1840 - 1860
- Sharply peaked eaves
- Decorative woodwork under the eaves
- Gothic (i.e. peaked) arches
- Georgetown examples:
 - Renwick Chapel, Oak Hill Cemetery
 - 1694 31st St.



Beaux Arts/Neoclassical:

- 1880 - 1920
- Very influenced by Greek and Roman
- Opulent
- Much more commonly used by institutions, rarely used for homes except for the very rich
- Georgetown examples:
 - Volta Bureau (at right)
 - PNC Bank at Wisc. and M



Tudor Revival:

- 1895 - 1945
- Facade decorated with faux half timber beams
- Steep roof
- Much more common in suburban developments
- Georgetown example:
 - Former Market Street Chapel at 1552 33rd St. (which was converted into this style during a 1920s refurbishment)

